



Press Release:

A New Federal Electoral Map is Taking Shape for British Columbia

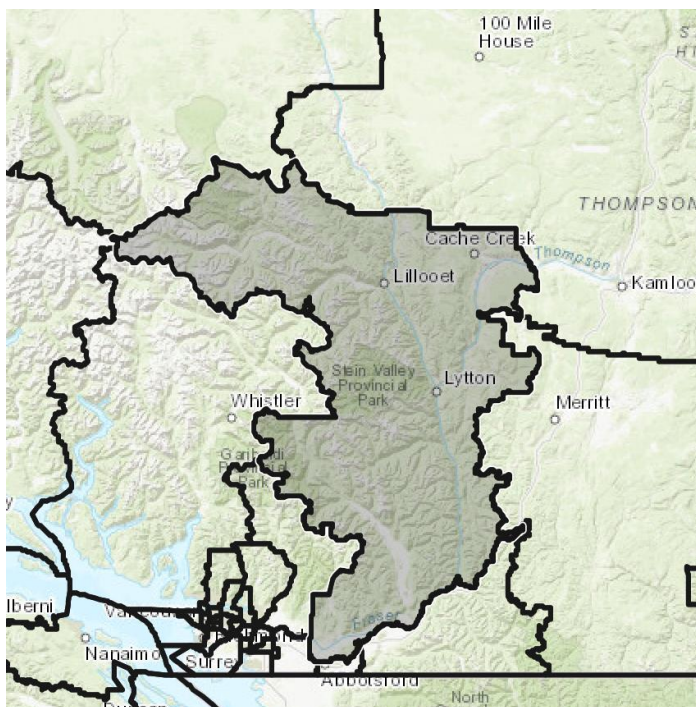
VANCOUVER, Monday, May 2, 2022 – The Federal Electoral Boundaries Commission for British Columbia has proposed a new electoral map for consideration at public hearings this spring and next fall. The map introduces changes to British Columbia's federal electoral district boundaries and has been developed through an independent and non-partisan process. There are currently two electoral boundary redistribution processes underway in British Columbia. This commission is responsible for federal electoral districts only.

"Our task is to create an additional riding and to adjust the boundaries of existing ridings to maintain effective federal representation for all British Columbians. We are proposing quite a few boundary changes. The changes are mainly in response to the significant but uneven growth of our population. That growth pattern creates a domino effect if we are to be fair and have relative equality between voters in different electoral districts. Our proposal necessarily gives attention to what is possible and practical given our varied and rugged geography and our distinct communities. We look forward to receiving public input on it," said the Honourable Justice Mary Saunders, Chair of the three-member commission. R. Kenneth Carty and Stewart Ladyman are the other members of the Commission who are responsible for the readjustment of the province's federal electoral boundaries.

The proposal reflects British Columbia's increase in population from 4,400,057 in 2011 to 5,000,879, as captured in the 2021 Census, and takes into consideration communities of interest or identity, as well as historic and geographic factors. The proposal can be found at redistribution2022.ca. It will be published in the Canada Gazette on May 7, 2022.

Under the *Electoral Boundaries Readjustment Act*, the Commission's main aim in redrawing boundaries is to divide the province into 43 electoral districts that are as close to the electoral quota as reasonably possible, while taking into consideration the factors listed above. The electoral quota is calculated by dividing the population of the province by the number of electoral districts it has been allocated. In the case of British Columbia, the quota for each electoral district is 116,300 (5,000,879 residents divided by 43 electoral districts).

Current boundary:



Proposed boundary:

