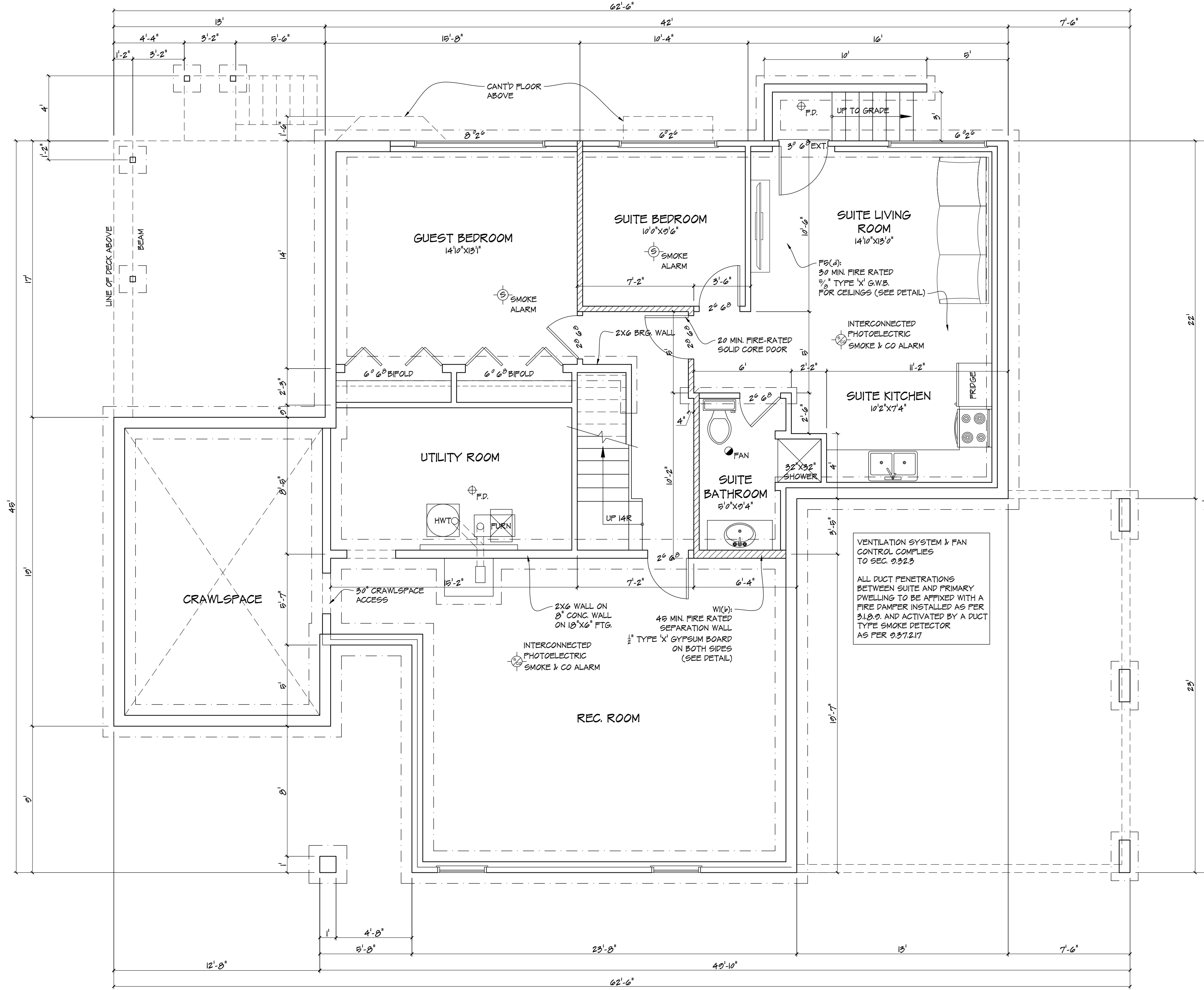
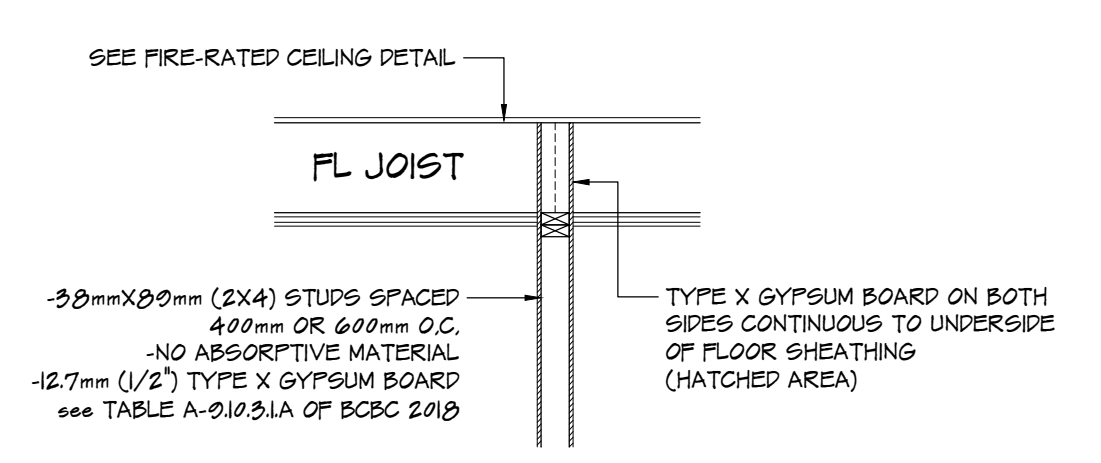


Attachment A

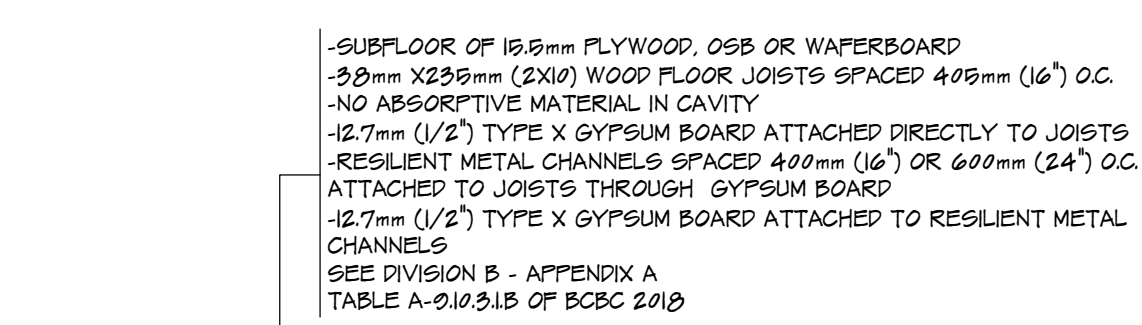


**BASEMENT**  
SCALE = 1/4" = 1'

GROSS FLOOR AREA	1769 SQ. FT.
SECONDARY SUITE AREA	629 SQ. FT.
CRAWLSPACE AREA	283 SQ. FT.
STAIR WELL AREA	38 SQ. FT.



**FIRE-RATED WALL-FLOOR DETAIL**  
SCALE = 1/2" = 1'

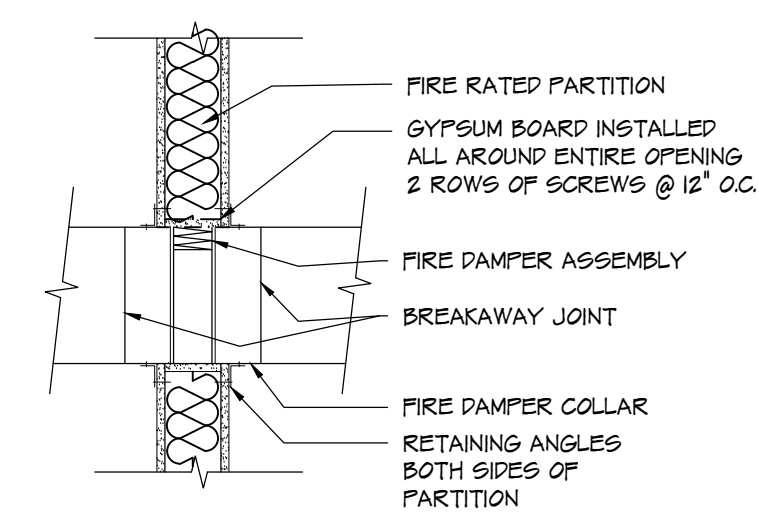


**FIRE-RATED CEILING DETAIL**  
SCALE = 1/2" = 1'

**SECONDARY SUITE**

SEE DIVISION B - PART 0  
SECTION 037.  
SECONDARY SUITES OF BCBC 2010

FIRE RATED WALL & CEILING BETWEEN DWELLING UNITS SEE DETAILS.  
FIRE RATED WALLBOARD ON BOTH SIDES OF THE FIRE SEPARATION MUST CONTINUE BEHIND PLUMBING FIXTURES, CABINETS AND EQUIPMENT.  
22 MIN FIRE RATED DOOR WITH SELF-CLOSER (MIN 32" WIDE BETWEEN PRINCIPLE DWELLING & SECONDARY SUITE)  
INTERCONNECTED PHOTOELECTRIC SMOKE & CO ALARM



**FIRE DAMPER DETAIL**  
SCALE: 1/2" = 1'



PHONE NO: 604-617-4014  
ADDRESS: 11800 141A STREET  
SURREY, B.C. V3R3K6  
EMAIL: janna\_c@clarkecustomhomes.ca  
WEBSITE: www.clarkecustomhomes.ca  
INSTAGRAM: @clarke.custom.homes

CLIENT:  
NAME: BR CUSTOM CONSTRUCTION LTD.  
PHONE NO: 604-970-2750  
EMAIL: brcustomconstruction@gmail.com

PROJECT:  
PROPOSED IMPROVEMENTS  
LOT 336 @ 8241 HAZEL CRESCENT  
MISSION, B.C.

TITLE:	BASEMENT FLOOR & DETAILS	
PROJECT #:	22-MIS-028	SHEET:
SCALE:	AS NOTED	A2
DATE:	MAY/2022	
DRAFTER:	JC	